

Technical Specifications

Power supply	10 ... 30VDC or 2x 1.5V AA batteries
Power consumption	typ. 0.07W, max. 1.4W (when rain sensor heating is on)
Power loss	max. 1.4W
Interfaces	Loxone Air: 868MHz (SRD Band Europe), 4 channels available 915MHz (ISM Band Region 2), 10 channels available max. Power 3.16mW
Battery lifetime	up to 2 years
Ambient temperature	-30 ... 70°C / -22 ... 158°F
Wind detection range	9 ... 145km/h / 5.6 ... 90mph
Brightness detection range	0 ... 188000lx
Temperature detection range	-40 ... 125°C / -40 ... 257°F
Rain sensor	integrated, heating only when extern powered
Safety rating	IP44
Maintenance & Cleaning	This device is free of main- tenance and may only be cleaned with a dry cloth.

Connection

Wire cross-section	0.08 ... 0.32mm ² / AWG28 ... 22
Stripping length	3.5mm / 0.14"
Temperature resistance	-40 ... 125°C / -40 ... 257°F

Information

Contains FCC ID: COR-ZWIR4512AC1

This device complies with part 15 of the FCC Rules.
Operation is subject to the following two conditions:

1. This device may not cause harmful interference
2. This device must accept any interference received,
including interference that may cause undesired operation

LOXONE

LOXONE

Need Help?

loxone.com/support



For additional information,
declaration of conformity, visit
www.loxone.com/datasheets

**Loxone
Electronics GmbH**
Smart Home 1
4154 Kollerschlag
Austria

Loxone UK
The Forum
Station Road
Theale, RG7 4RA
United Kingdom

V121023



Weather Station Air

Part No: 100245



About the product

The Weather Station Air measures wind, rain, brightness and temperature. You can use this data for a variety of functions throughout your application.

Features

- Wind sensor
- Wind alarm
- Rain sensor
- Brightness sensor
- Temperature sensor

Information

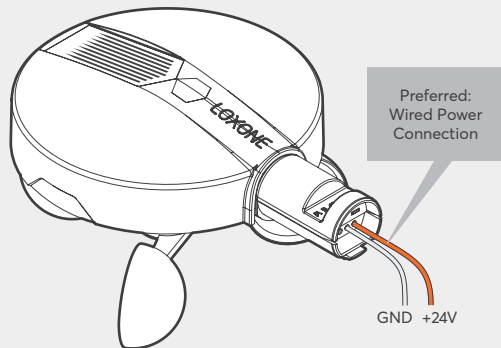
Please note that the temperature sensor may not always accurately record the external temperature. This is due to direct sunlight warming the housing, which can influence the temperature reading. Always select an installation place that's suitable for the application.

Installation

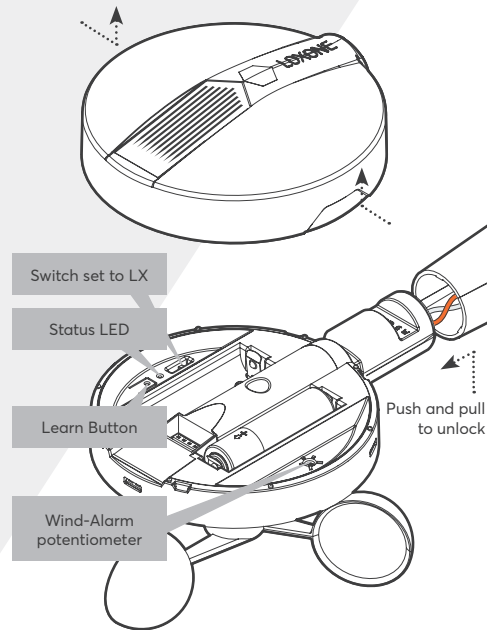
We suggest you install the weather station in a place where wind, rain and brightness can be detected without interference. Install and connect the device as shown, either on a pole or directly on the wall, with the provided accessories. Please note that buildings or objects in close proximity to the Weather Station could cause air turbulence which may influence the accuracy of wind measurements.

Now pair the Weather Station with your Miniserver via Loxone Config.

You can also power the Weather Station Air with the AA batteries (included), but please note that due to the higher power consumption required, the anti-condensation feature which heats the rain sensor will not be possible. As well set the wind alarm speed on the device manually by adjusting the potentiometer settings.



Push on both sides and pull to open the top



Wind-Alarm Potentiometer Settings	Threshold in km/h / mph
1	20 / 12.4
2	25 / 15.5
3	30 / 18.6
4	40 / 24.9
5	65 / 40.4

Left stop of potentiometer for 1, right stop for 5



For additional information, declaration of conformity, visit www.loxone.com/help/weather-station-air